

以卓越技术和专业服务  
为您的洁净空间提供系统化的解决方案

## GKF系列高效送风口

### Series GKF HEPA Supply Unit



## 公司简介

## Company profile

苏州华泰空气净化设备有限公司是一家有着40年历史的、专业生产各种初、中、高效、超高效空气过滤器以及送风口、FFU、层流罩、称量罩、隔离器等净化设备的专业公司。是目前国内为数不多的规模型过滤器制造企业。

公司前身为苏净二厂，从上世纪七十年开始为苏净厂配套生产过滤器，是当时国内极少数几家生产空气过滤器的企业之一。为了引进国外先进生产技术，跟着改革开放的大潮，在1998年由吴净净化设备有限公司（苏净二厂）、日本Airtech公司和江苏苏净集团股份有限公司合资成立了苏州华泰空气净化设备有限公司。

华泰公司现有员工240人，占地面积4万多平方米。公司拥有三条国际先进的无隔板过滤器生产线，可生产从18mm至300mm厚度滤芯的无隔板过滤器，为行业内领先水平。350度耐高温过滤器已经可以符合GMP认证标准。另外，公司设计研发的CRABS、隔离器等净化设备也得到了客户的高度认可。随着我国液晶面板和半导体行业的迅猛发展，公司从2010年开始涉足分子污染控制领域，引入美国热电分析仪器，做了大量的实验，有针对性的开发了符合现场应用的化学过滤器，为客户解决很多难题。

公司于1998年12月通过ISO9001质量体系认证。于2001年底通过ISO9001-2000版认证及ISO14001环境管理体系和复审认证。

为了始终保持行业的领先地位，公司积极参与了多项国家标准的制定，同时也与复旦大学、天津大学和同济大学保持着深入的技术合作。

为了进一步加强公司品牌的塑造，公司与2009年注册了“泰净”商标，并在2016年对“泰净”商标进行了重新设计升级，使其更加符合公司的战略发展。

公司使命：以卓越技术和专业服务为您的洁净空间提供系统化的解决方案。

Suzhou Huatai Air Filters Co., Ltd. is a company with 40 years of history, specializing in the production of various general filter, fine filter and HEPA filters, ULPA filters, we also produce air supply, FFU, and different types of clean equipment such as laminar flow hood, weighing hood, isolator. Our company is one of the few scale domestic air filter producer.

Huatai was previously the 2nd branch of Sujing group. We started to produce filter for Sujing as early as the 70s of last century. Huatai was one of few air filter producer at that time. With the tide of reform and opening up, to utilize oversea advanced technologies well, Wujing cleaning equipment co., Ltd (2nd branch of Sujing group), Japan Airtech, and Sujing group establish a joint venture - Suzhou huatai air filter co., Ltd in 1998.

Huatai existing staff is 240 people. Our floor area is 40,000 square meter. Our company is industry-leading, it has three international advanced mini-pleat filter production lines, can produce mini-pleat filters whose filter element thickness scope is from 18mm to 300mm. The 350°C temperature resistant HEPA filter could meet the request of GMP certificate. Beside that, Huatai also successfully design and R&D other clean equipment such as CRABS, isolator. Those products have gained full appreciation of customers. With the rapid development of LCD & semiconductor industries, we stepped in molecular pollution control field, by leading-in USA Thermofisher analysis instrument, after lot experiments and test, we developed chemical filter according to the request of different on-site application, successfully resolved serious problems of customers.

Our company passed the ISO9002 quality system certification in December 1998, then passed the ISO9002-2000& ISO14001 Environmental Management Systems & certification at the end of 2001.

To remain stable the industry-leading level, we actively take part in the job of compiling various of related national standards, and keep in-depth technical cooperation with Fudan University, Tianjin University and Tongji University.

To further enhance the construction of company brand, we registered "Tajing" as trademark, and do re-design and upgrading on it, to better meet the request of company strategic development.

Company mission: Providing a systematic solution for your clean space by virtue of excellence in technical and professional services.

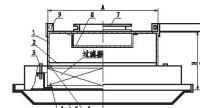


## 无泄漏高效送风口

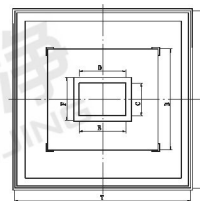
## Leak-free HEPA Supply Unit

- 主要应用在洁净厂房的末端送风，如：制药、医疗、食品、电子、半导体等行业。
- 产品采用特殊的压力控制方式，创新性的安装结构，确保无泄漏，可靠性高于其他类型的送风口，可以通过严格的DOP (PAO) 测试。
- 可以选配DOP发雾管、DOP采样管和过滤器压差管。
- 箱体表面采用喷塑处理，耐腐蚀性强。
- The terminal air supply unit of clean room as in pharmaceutical, medical, foodstuff, electronic, semi-conductor etc. industries.
- Adopting special proposal to control the air pressure, which guarantees the air leak-free via a know-how structure. The air-tight reliability of the unit is much better than those in common mode. The unit can be used in the field where the critical DOP test shall be demanded. (PAO)
- Matching with DOP test, as option, the tubes and pipes for DOP aerosol input, DOP sample and pressure drop of filter can be chosen.
- The metal casing of the unit is plastic-coated with good performance of anti-corrosion.

### 结构示意图 Structure



- 1、箱体(白色)
- 2、过滤器安装框
- 3、压紧螺栓
- 4、高效过滤器
- 5、散流板(白色)
- 6、密封胶
- 7、进风口法兰(可圆形)
- 8、扩散网板
- 9、吊块



- 1、Casing (white)
- 2、Installation frame of HEPA filter
- 3、Pressed bolt
- 4、HEPA filter
- 5、air flow diffuser (white)
- 6、seal gasket
- 7、Air-let flange (option: round shape)
- 8、Air distribution plate
- 9、suspension block



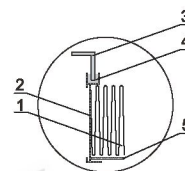
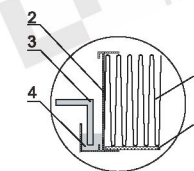
### 型号尺寸及其它参数 | Standard specifications

型号 Model	箱体安装尺寸 Installation hole size B×A×H(mm)	过滤器尺寸 Filter size (mm)	额定风量 Rated air flow (m³/h)	进风管尺寸 Air supply duct size D×C(mm)	风管连接尺寸 Connection size for Air supply duct E×F(mm)	箱体外形尺寸 Casing overall size T×S×R(mm)	重量 Weight (KG)	
GKF320Z	GKF320ZF	400×400×395/225	320×320×80	360	200×200	250×250	460×460×430/260	≈12/10
GKF350Z	GKF350ZF	430×430×395/225	350×350×80	450	200×200	250×250	490×490×430/260	≈13/11
GKF400Z	GKF400ZF	480×480×395/225	400×400×80	500	200×200	250×250	540×540×430/260	≈14/12
GKF484Z	GKF484ZF	564×564×395/225	484×484×80	800	320×200	370×250	624×624×430/260	≈17/15
GKF550Z	GKF550ZF	630×630×395/225	550×550×80	1000	320×200	370×250	690×690×430/260	≈19/17
GKF610Z	GKF610ZF	690×690×395/225	610×610×80	1350	320×250	370×300	750×750×430/260	≈22/19
GKF820Z	GKF820ZF	900×680×395/225	820×600×80	1800	320×250	370×300	960×740×430/260	≈25/22
GKF630Z	GKF630ZF	710×710×395/225	630×630×80	1500	320×250	370×300	770×770×430/260	≈22/20
GKF726Z	GKF726ZF	806×564×395/225	726×484×80	1200	400×200	450×250	866×624×430/260	≈21/19
GKF915Z	GKF915ZF	995×690×395/225	915×610×80	2000	500×250	550×300	1055×750×430/260	≈27/24
GKF968Z	GKF968ZF	1048×564×395/225	968×484×80	1700	500×200	550×250	1108×624×430/260	≈26/23
GKF1220Z	GKF1220ZF	1300×690×395/225	1220×610×80	2700	500×200	550×250	1360×750×430/260	≈32/28
GKF945Z	GKF945ZF	1025×710×395/225	945×630×80	2150	500×250	550×300	1085×770×430/260	≈28/25
GKF1260Z	GKF1260ZF	1340×710×395/225	1260×630×80	3000	600×250	650×300	1400×770×430/260	≈34/30

\*可根据客户特殊要求订制。  
Note: The special size of URS is also available and accepted.

**液槽无隔板高效送风口**
**Liquid sealant mini-pleat HEPA supply unit**

- 主要应用在洁净厂房的末端送风,如:制药、医疗、食品、电子、半导体等行业。
- 产品采用液槽密封的形式,确保过滤器与箱体之间无泄露,可以通过严格的DOP(PAO)测试。
- 可以选配DOP发雾管、DOP采样管和过滤器压差管。
- 箱体表面采用喷塑处理,耐腐蚀性强。
- The terminal air supply unit of clean room as in pharmaceutical, medical, foodstuff, electronic, semi-conductor etc. industries.
- Adopting the liquid sealant, which guarantees the air leak-free. The air-tight reliability of the unit is much better than those in common mode. The unit can be used in the field where the critical DOP test shall be demanded. (PAO)
- Matching with DOP test, as option, the tubes and pipes for DOP aerosol input, DOP sample and pressure drop of filter can be chosen.
- The metal casing of the unit is plastic-coated with good performance of anti-corrosion.


 过滤器 I 型型材  
Filter type I profile

 过滤器 II 型型材  
Filter type II profile

- 滤芯
- 过滤器框架
- 安装框架
- 密封胶
- 护网

- Filter Medium
- Filter Frame
- Installation Frame
- Sealant
- Retainer

**> 型号尺寸及其它参数 | Standard specifications**

型号 Model	箱体安装尺寸 Installation hole size B×A×H(mm)	过滤器尺寸 Filter size (mm)	额定风量 Rated air flow (m³/h)	进风管尺寸 Air supply duct size D×C(mm)	风管连接尺寸 Connection size for Air supply duct E×F(mm)	箱体外形尺寸 Casing overall size T×S×R(mm)	重量 Weight (KG)	
GKF350Y	GKF350YD	400×400×420	350×350×95	450	200×200	250×250	460×460×468	≈10
GKF400Y	GKF400YD	450×450×420	400×400×95	500	200×200	250×250	510×510×468	≈12
GKF484Y	GKF484YD	534×534×420	484×484×95	800	320×200	370×250	594×594×468	≈14
GKF550Y	GKF550YD	600×600×420	550×550×95	1000	320×200	370×250	660×660×468	≈15
GKF610Y	GKF610YD	660×660×420	610×610×95	1350	320×250	370×300	720×720×468	≈17
GKF630Y	GKF630YD	680×680×420	630×630×95	1500	320×250	370×300	740×740×468	≈21
GKF915Y	GKF915YD	965×660×420	915×610×95	2000	500×250	550×300	1025×720×468	≈22
GKF1220Y	GKF1220YD	1270×660×420	1220×610×95	2700	500×200	550×250	1330×720×468	≈21
GKF945Y	GKF945YD	995×680×420	945×630×95	2150	500×250	550×300	1055×740×468	≈27
GKF1260Y	GKF1260YD	1310×680×420	1260×630×95	3000	600×250	650×300	1370×740×468	≈28

\*可另选: GKF xxx YF 矮箱体型风口, 其外型R=298, H=250。  
Another option: GKF xxx YF short box shape tyure, the round overall size is R=298, H=250

\*可接受客户特殊要求订制。  
The special size of URS is also available and accepted.

**> 型号尺寸及其它参数 | Standard specifications**

型号 Model	箱体安装尺寸 Installation hole size B×A×H(mm)	过滤器尺寸 Filter size (mm)	额定风量 Rated air flow (m³/h)	进风管尺寸 Air supply duct size D×C(mm)	风管连接尺寸 Connection size for Air supply duct E×F(mm)	箱体外形尺寸 Casing overall size T×S×R(mm)	重量 Weight (KG)	
GKF384Y	GKF384YD	434×434×420	384×384×90	480	200×200	250×250	494×494×468	≈11
GKF434Y	GKF434YD	484×484×420	434×434×90	500	200×200	250×250	544×544×468	≈13
GKF584Y	GKF584YD	634×634×420	584×584×90	1000	320×200	370×250	694×694×468	≈16
GKF644Y	GKF644YD	694×694×420	644×644×90	1450	320×250	370×300	754×754×468	≈18
GKF854Y	GKF854YD	904×684×420	854×634×90	1950	320×250	370×300	964×744×468	≈21
GKF664Y	GKF664YD	714×714×420	664×664×90	1600	320×250	370×300	774×774×468	≈19
GKF949Y	GKF949YD	999×694×420	949×644×90	2200	500×250	550×300	1059×754×468	≈23
GKF1254Y	GKF1254YD	1304×694×420	1254×644×90	2900	500×200	550×250	1364×754×468	≈28
GKF979Y	GKF979YD	1029×714×420	979×664×90	2400	500×250	550×300	1089×774×468	≈24
GKF1294Y	GKF1294YD	1344×714×420	1294×664×90	3100	600×250	650×300	1404×774×468	≈29

\*可另选: GKF xxx YF 矮箱体型风口, 其外型R=298, H=250。  
Another option: GKF xxx YF short box shape tyure, the round overall size is R=298, H=250

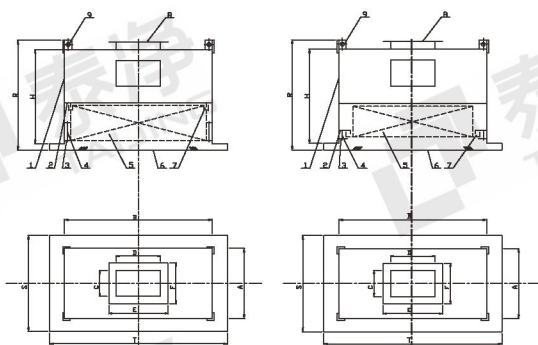
\*可接受客户特殊要求订制。  
The special size of URS is also available and accepted.



送风口(Air outlet)

 顶液槽 ( I 型)  
Top tank (type I)

 侧液槽/反法兰液槽 ( II 型)  
Side tank / Counter  
flanges tank (type II)

**> 结构示意图 | Structure**


- 箱体(灰色)
- 过滤器安装框
- 定位压盖块
- 压紧螺栓
- 高效过滤器
- 散流板(白色)
- 液槽胶
- 进风口法兰(可圆形)
- 吊块

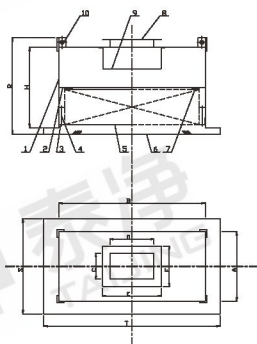
- Casing (grey)
- Installation frame of HEPA filter
- Fixing Pressed block
- Pressed bolt
- HEPA filter
- air flow diffuser (white)
- liquid sealant
- Air-let flange (option: round shape)
- Suspension block

 配过滤器 ( I 型)  
Matched filter(type I)

 配过滤器 ( II 型)  
Matched filter(type II)

**无隔板高效送风口**
**Mini-pleat HEPA supply unit**

- 主要应用在洁净厂房的末端送风，如：制药、医疗、食品、电子、半导体等行业。
- 产品采用机械压紧密封的形式，箱体材质为优质冷轧板。
- 可以选配DOP发雾管、DOP采样管和过滤截止管。
- 表面采用喷塑处理，耐腐蚀性强。
- The terminal air supply unit of clean room as in pharmaceutical, medical, foodstuff, electronic, semi-conductor etc. industries.
- Adopting mechanic press air tight mode. Casing is made of cold-rolled steel plate.
- Matching with DOP test, as option, the tubes and pipes for DOP aerosol input, DOP sample and pressure drop of filter can be chosen.
- The metal casing of the unit is plastic-coated with good performance of anti-corrosion.

**结构示意图 | Structure**


- 箱体(灰色)
  - 过滤器安装框
  - 定位压紧块
  - 压紧螺栓
  - 高效过滤器
  - 散流板(白色)
  - 密封胶
  - 进风口法兰(可圆形)
  - 扩散网板
  - 吊块
- Casing (grey)
  - Installation frame of HEPA filter
  - Fixing Pressed block
  - Pressed bolt
  - HEPA filter
  - Air-flow diffuser (white)
  - Seal gasket
  - Air-let flange (option: round shape)
  - Air distribution plate
  - Suspension block


**型号尺寸及其它参数 | Standard specifications**

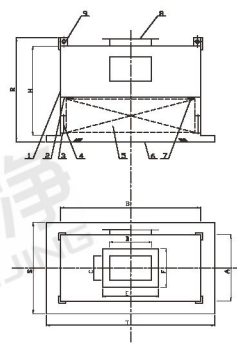
型号 Model	箱体安装尺寸 Installation hole size B×A×H(mm)	过滤器尺寸 Filter size (mm)	额定风量 Rated air flow (m³/h)	进风管尺寸 Air supply duct size D×C(mm)	风管连接尺寸 Connection size for Air supply duct E×F(mm)	箱体外形尺寸 Casing overall size T×S×R(mm)	重量 Weight (KG)
GKF320F	370×370×220	320×320×80	360	200×200	250×250	430×430×268	≈12
GKF350F	400×400×220	350×350×80	450	200×200	250×250	460×460×268	≈14
GKF400F	450×450×220	400×400×80	500	200×200	250×250	510×510×268	≈15
GKF484F	534×534×220	484×484×80	800	320×200	370×250	594×594×268	≈16
GKF550F	600×600×220	550×550×80	1000	320×200	370×250	660×660×268	≈17
GKF610F	660×660×220	610×610×69		320×250	370×300	720×720×268	≈18
GKF820F	870×650×220	820×600×69	1300	320×250	370×300	930×710×268	≈20
GKF630F	680×680×220	630×630×80	1500	320×250	370×300	740×740×268	≈22
GKF726F	776×534×220	726×484×80	1200	400×200	450×250	836×594×268	≈22
GKPF15F	965×660×220	915×610×69	1500	500×250	550×300	1025×720×268	≈24
GKPF68F	1018×534×220	968×484×80	1700	500×200	550×250	1078×594×268	≈32
GKF1220F	1270×660×220	1220×610×69	2000	500×200	550×250	1330×720×268	≈34
GKPF945F	995×680×220	945×630×80	2150	500×250	550×300	1055×740×268	≈32
GKF1260F	1310×680×220	1260×630×80	3000	600×250	650×300	1370×740×268	≈37

\*可另选：GKF xxx D 高箱体型送风口，其外框只在448mm以内，H在400mm以内(不带扩散网板)。  
Can be an alternate: Please contact GKF XXX high D box shape type, its exterior R within 448 mm, within 400 H(without diffusion sheet).

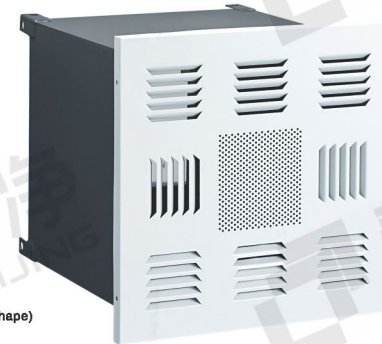
\*可接受客户特殊要求订制。  
Note: The special size of URS is also available and accepted.

**有隔板高效送风口**
**HEPA supply unit**

- 主要应用在洁净厂房的末端送风，如：制药、医疗、食品、电子、半导体等行业。
- 产品采用机械压紧密封的形式，箱体材质为优质冷轧板。
- 可以选配DOP发雾管、DOP采样管和过滤截止管。
- 表面采用喷塑处理，耐腐蚀性强。
- The terminal air supply unit of clean room as in pharmaceutical, medical, foodstuff, electronic, semi-conductor etc. industries.
- Adopting mechanic press air tight mode. Casing is made of cold-rolled steel plate.
- Matching with DOP test, as option, the tubes and pipes for DOP aerosol input, DOP sample and pressure drop of filter can be chosen.
- The metal casing of the unit is plastic-coated with good performance of anti-corrosion.

**结构示意图 | Structure**


- 箱体(灰色)
  - 过滤器安装框
  - 定位压紧块
  - 压紧螺栓
  - 高效过滤器
  - 散流板(白色)
  - 密封胶
  - 进风口法兰(可圆形)
  - 吊块
- Casing (grey)
  - Installation frame of HEPA filter
  - Fixing Pressed block
  - Pressed bolt
  - HEPA filter
  - air flow diffuser (white)
  - Seal gasket
  - Air-let flange (option: round shape)
  - Suspension block


**型号尺寸及其它参数 | Standard specifications**

型号 Model	箱体安装尺寸 Installation hole size B×A×H(mm)	过滤器尺寸 Filter size (mm)	额定风量 Rated air flow (m³/h)	进风管尺寸 Air supply duct size D×C(mm)	风管连接尺寸 Connection size for Air supply duct E×F(mm)	箱体外形尺寸 Casing overall size T×S×R(mm)	重量 Weight (KG)
GKF320	370×370×530	320×320×220	400	200×200	250×250	430×430×578	≈20
GKF350	400×400×530	350×350×220	500	200×200	250×250	460×460×578	≈22
GKF484	534×534×530	484×484×220	1000	320×200	370×250	594×594×578	≈26
GKF610	660×660×460	610×610×150		320×250	370×300	720×720×508	≈30
GKF820	870×650×460	820×600×150	1300	320×250	370×300	930×710×508	≈35
GKF630	680×680×530	630×630×220		320×250	370×300	740×740×578	≈35
GKF726	776×534×530	726×484×220	1500	400×200	450×250	836×594×578	≈35
GKPF15	965×660×460	915×610×150		500×250	550×300	1025×720×508	≈40
GKPF68	1018×534×530	968×484×220	2000	500×200	550×250	1078×594×578	≈50
GKF1220	1270×660×460	1220×610×150		500×200	550×250	1330×720×508	≈55
GKPF945	995×680×530	945×630×220	2300	500×250	550×300	1055×740×578	≈50
GKF1260	1310×680×530	1260×630×220	3000	600×250	650×300	1370×740×578	≈60

\*可接受客户特殊要求订制。  
The special size of URS is also available and accepted.